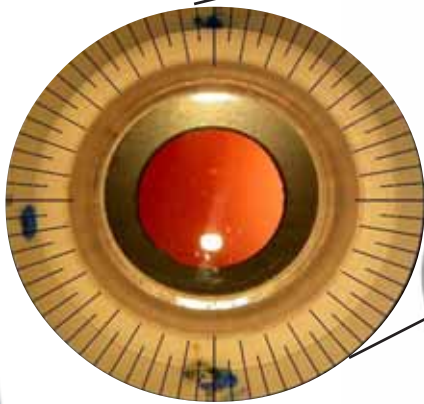


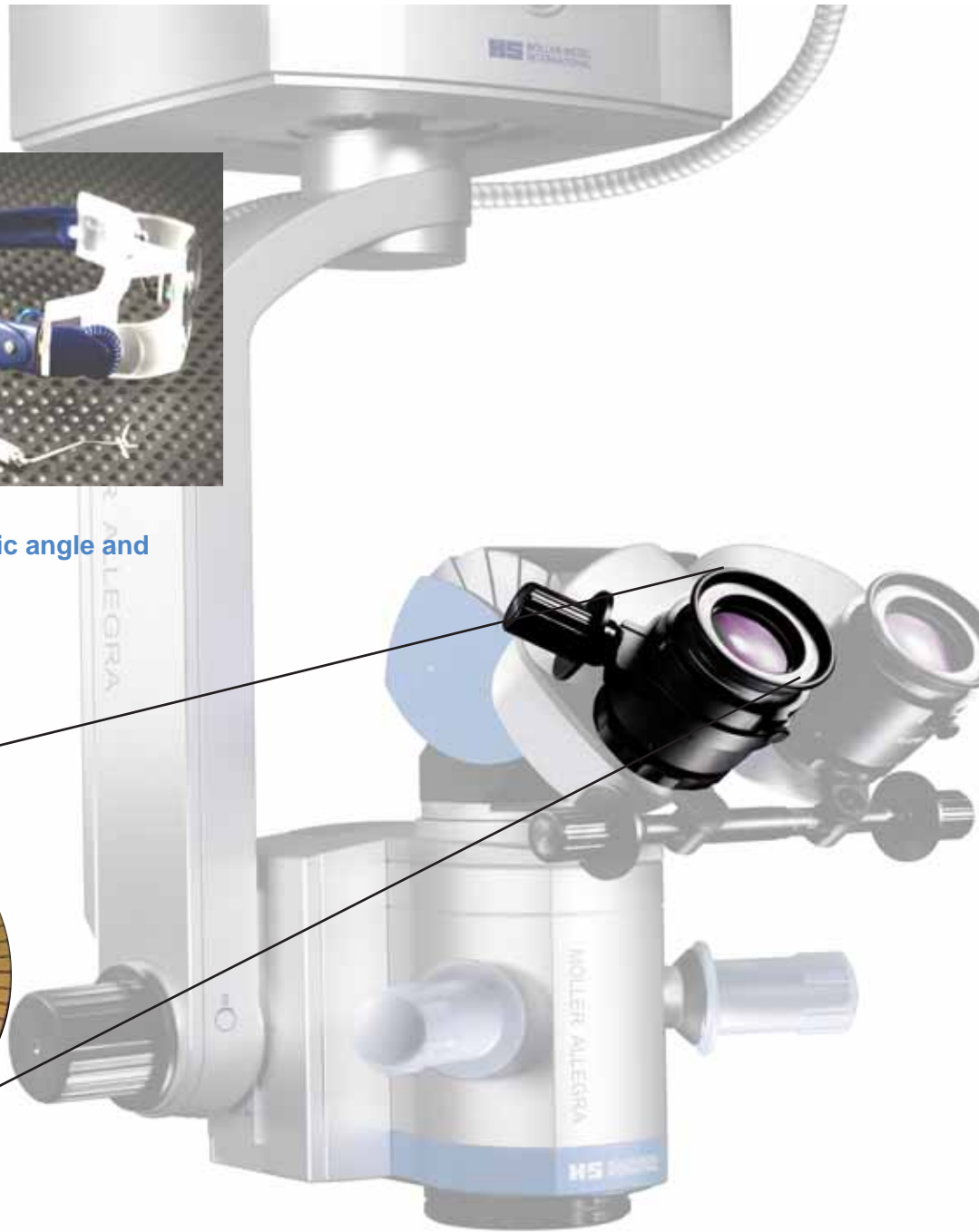
TOCULAR



Determination of astigmatic angle and ink-marking



Alignment of toric IOL



During implantation of toric IOLs precise angle alignment of the lens in the capsule is required. For this procedure **TOCULAR** is offered by Möller-Wedel.

The **TOCULAR** is a wide angle ocular with a rotating reticle, which shows a cross hair

and an angular scale at the periphery of the visual field. The reticle is clear in the center of the field and can be rotated manually via a sterilizable knob.

IOL alignment better than $\pm 1^\circ$ is achievable.

Working Principle

Pre-operative work: Marking of the eye

Prior to the operation the astigmatic angle has to be determined with a keratoscope or a biometer. We recommend the use of the Haag-Streit LENSTAR. The vertical and/or horizontal coordinates are ink-marked on the eye with a sterilizable pre-marker. We recommend the Davis pre-marking system distributed by John Weiss, which may also be purchased from Möller-Wedel. Included in the system are fixation glasses with PD setting and fixation light.

During surgery: Alignment of the toric IOL

After implantation of the IOL, the microscope zoom is adjusted to show the ink-markings in the visual field of the oculars. With the knob on the **TOCULAR** the reticle is turned to align the large scaled markings with the ink-marks on the eye. Subsequently the zoom is adjusted to show the scaled markings of the toric IOL. Now the IOL can be brought into position using the medium and small reticle markings.

Technical Data

Ocular parameters 10 x 21 mm

Reticle markings	large:	180° steps
	medium:	10° steps
	small:	5° steps
Rotation		$\pm 180^\circ$
Positioning of ocular		left or right